

# LUYS MILAN

ca. 1500 - 1561

## Sechs Pavanen

Edition: Thomas Königs (2004)

# Sechs Pavanen

El Maestro (1535)

Edition: Thomas Königs (2004)

Luys Milan  
(ca. 1500 - 1561)

## PAVANA I

3=8

3

6

11

17

21

26

CI

I

30

I

35

38

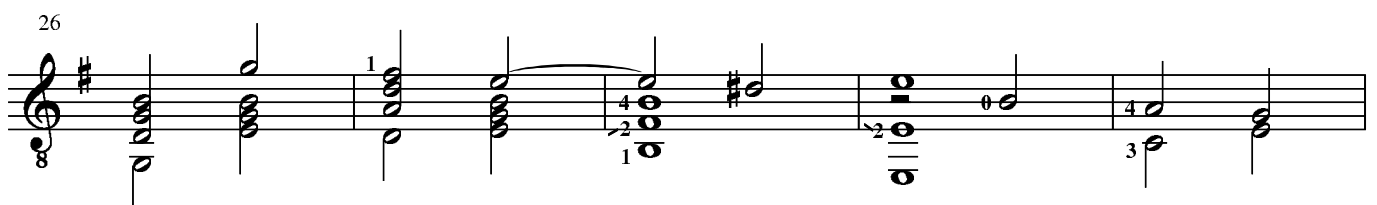
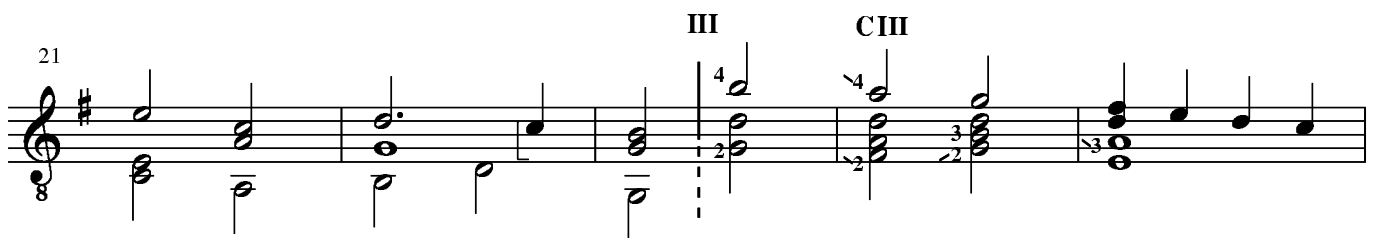
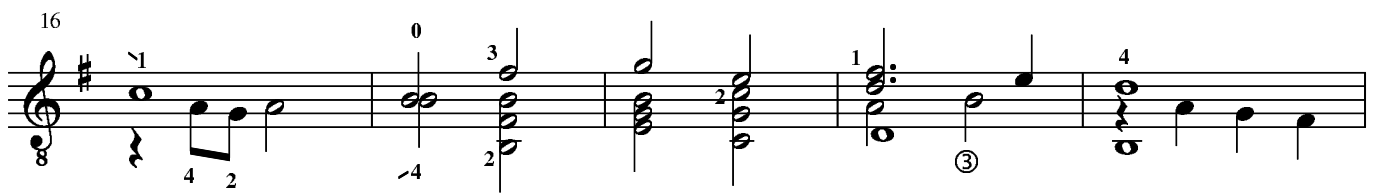
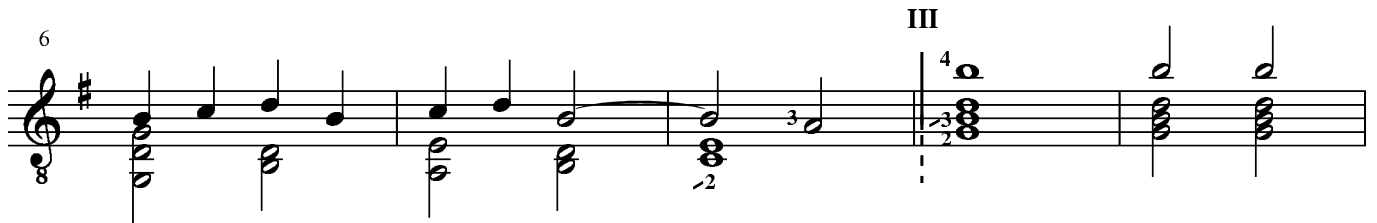
43

47

51

55

## PAVANA II



36

41

III

46

51

56

61

66

## PAVANA III

CI

7

13

19

I

25

I

31

38 CIII

The image shows a musical score for a piece titled "PAVANA III". The score is written on a single staff in treble clef with a key signature of one flat (B-flat). The piece is divided into measures, with measure numbers 7, 13, 19, 25, 31, and 38 indicated. The notation includes various chords, single notes, and rests. Fingerings are indicated by numbers 1-4 above or below notes. Some measures contain a "CI" or "CIII" marking above the staff. The score ends at measure 38.

45 CI

8

51

8

57

8

③ -----

62

8

68

8

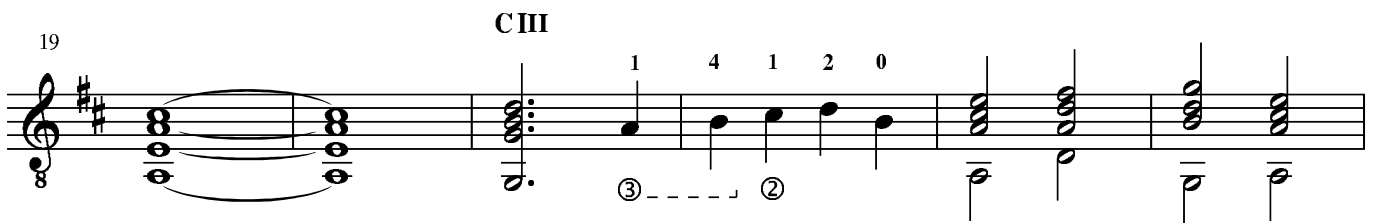
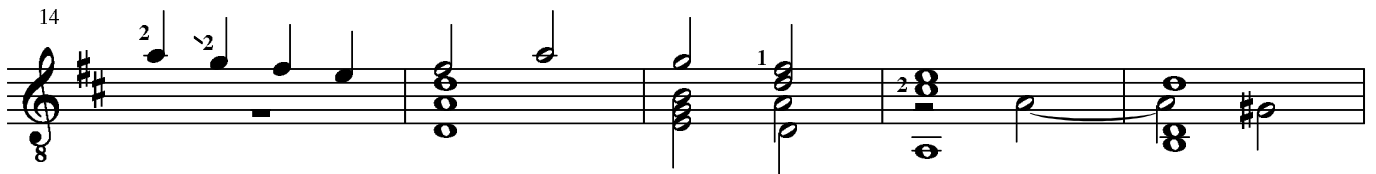
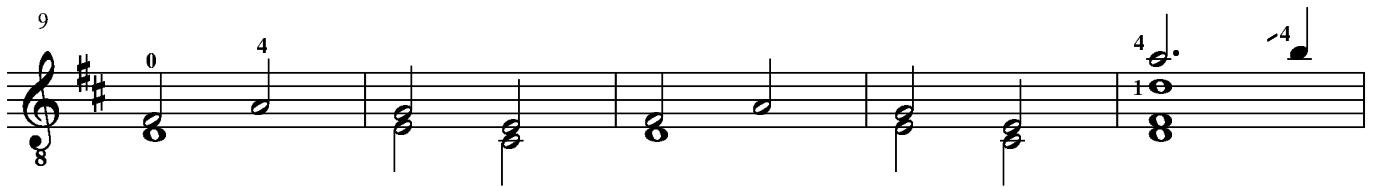
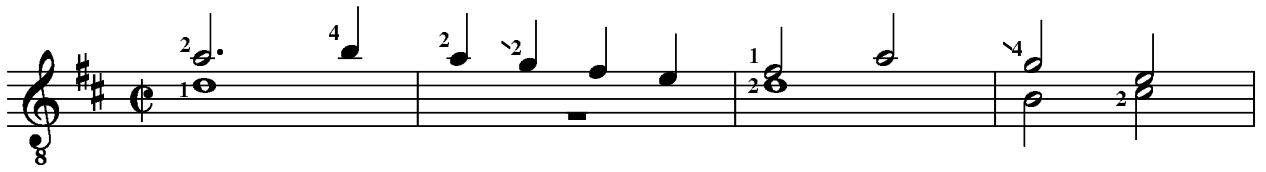
74

8

80

8

## PAVANA IV





31

III

37

42

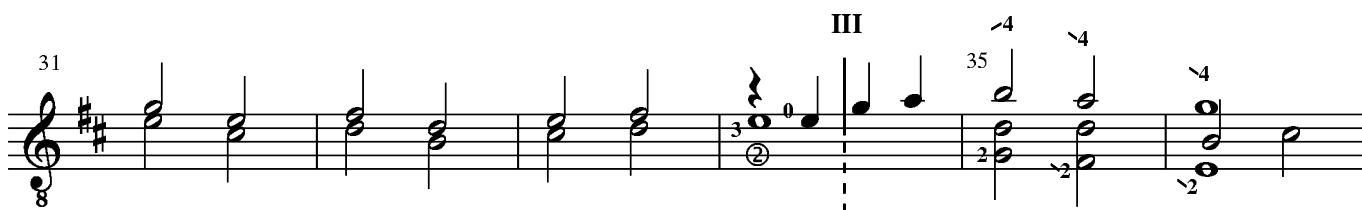
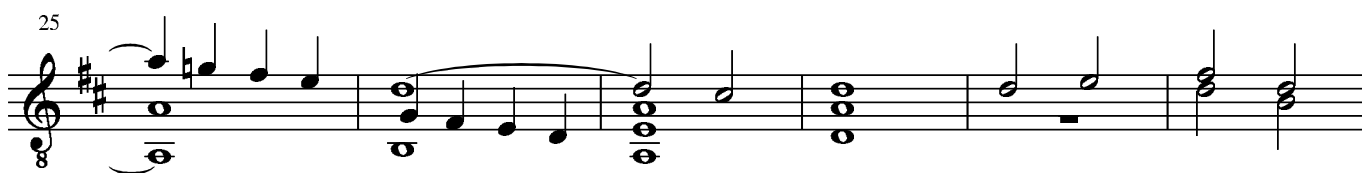
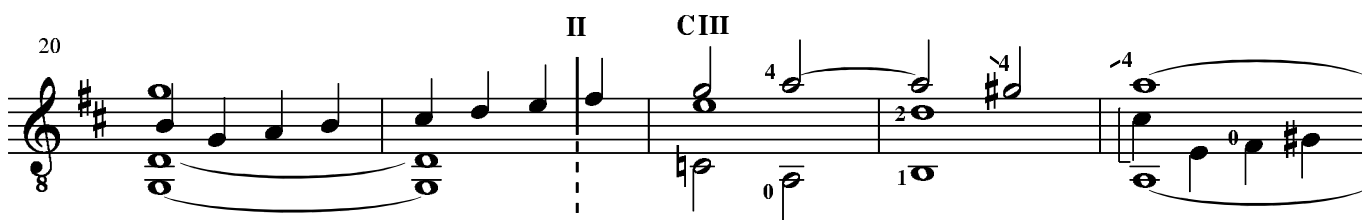
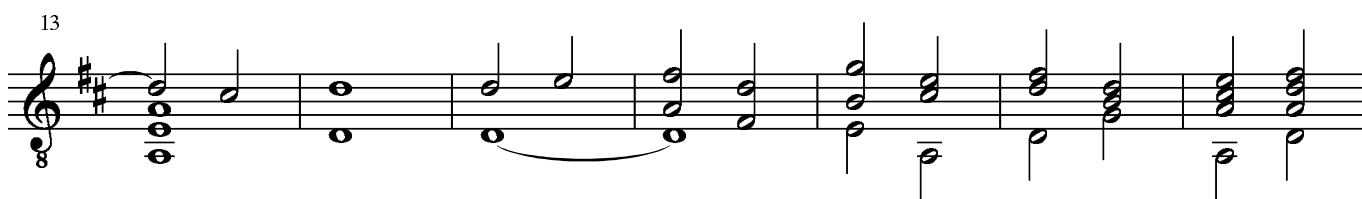
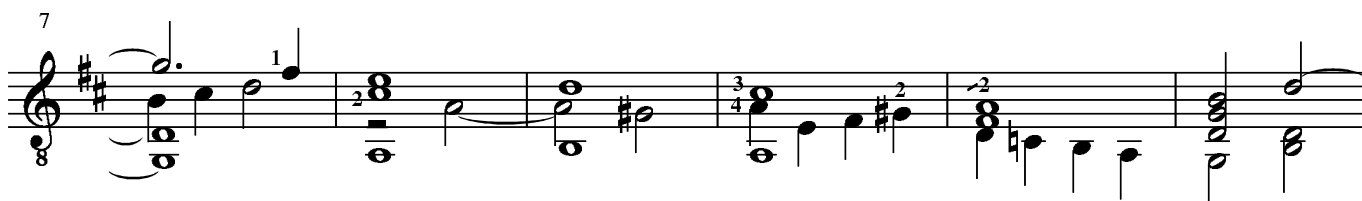
47

51

55

59

## PAVANA V



## PAVANA VI

II      CIII

5

9

13

17

21

## Revisionsbericht:

Pavana I  
Takt 27  
original:



Pavana V  
Takt 35  
original:



## ANMERKUNGEN:

Die Anmerkungen von Milan zu den Pavanen reiche ich demnächst in einer deutschen Übersetzung nach.  
Soviel vorab:  
Milan empfiehlt für die Pavanen 2, 5 und 6 ein schnelles Tempo  
und er empfiehlt für die Pavanen 3, 5 und 6 Wiederholungen.