

P. Schacht

1897

6, II, 12.

P. Schall. Kompositioner Nr. 9

Apr 26 April
par

J. P. Small

Sonate
Allegro ma non tanto.

Handwritten musical notation for the first system, consisting of two staves. The upper staff features a complex texture of sixteenth-note chords and arpeggios. The lower staff provides a harmonic accompaniment with chords and some melodic lines. Dynamic markings include *mfr* (mezzo-forte) and *for* (forte).

Handwritten musical notation for the second system, continuing the two-staff format. The upper staff maintains the intricate sixteenth-note patterns, while the lower staff continues with chordal accompaniment.

Handwritten musical notation for the third system. The upper staff shows a continuation of the sixteenth-note textures. The lower staff includes dynamic markings such as *mfr* and *for*.

Handwritten musical notation for the fourth system. The upper staff features a more active melodic line with sixteenth-note runs. The lower staff continues with accompaniment, marked with *fr* (forte).

Handwritten musical notation for the fifth system. The upper staff contains a dense texture of sixteenth-note chords. The lower staff provides a steady accompaniment with chords.

Handwritten musical notation for the sixth system. The upper staff shows a melodic line with sixteenth-note patterns. The lower staff continues with accompaniment, marked with *for*.



Handwritten musical notation on a five-line staff. The upper part features a treble clef and a complex melodic line with many beamed notes and slurs. The lower part features a bass clef and a simpler accompaniment line with some notes and rests.

Handwritten musical notation on a five-line staff. The upper part features a treble clef and a complex melodic line with many beamed notes and slurs. The lower part features a bass clef and a simpler accompaniment line with some notes and rests.

Handwritten musical notation on a five-line staff. The upper part features a treble clef and a complex melodic line with many beamed notes and slurs. The lower part features a bass clef and a simpler accompaniment line with some notes and rests.

Handwritten musical notation on a five-line staff. The upper part features a treble clef and a complex melodic line with many beamed notes and slurs. The lower part features a bass clef and a simpler accompaniment line with some notes and rests.

Volte subito.

5.

Handwritten musical notation system 1. The upper staff contains a complex melodic line with many beamed notes. The lower staff contains a bass line with notes and rests. A dynamic marking *mf* is present at the beginning of the lower staff.

Handwritten musical notation system 2. Similar to system 1, with a complex upper staff and a bass line. A small cross symbol is written above the first measure of the upper staff.

Handwritten musical notation system 3. The upper staff continues with complex melodic patterns. The lower staff features a bass line with notes and rests. A key signature change to two flats is indicated by a '6' with a flat sign.

Handwritten musical notation system 4. The upper staff continues with complex melodic patterns. The lower staff features a bass line with notes and rests.

Handwritten musical notation system 5. The upper staff continues with complex melodic patterns. The lower staff features a bass line with notes and rests.

Handwritten musical notation system 6. The upper staff features a complex melodic line with many beamed notes. The lower staff contains a bass line with notes and rests. Dynamic markings *for* and *fr* are present.

Handwritten musical notation for the first system. The treble staff contains a complex rhythmic pattern with many beamed notes. The bass staff contains a simpler pattern with some beamed notes. Dynamic markings include *p.* and *for*.

Handwritten musical notation for the second system. The treble staff continues with complex rhythmic patterns. The bass staff has fewer notes, mostly beamed together.

Handwritten musical notation for the third system. The treble staff has complex rhythmic patterns. The bass staff has a *p.* marking and some beamed notes.

Handwritten musical notation for the fourth system. The treble staff has a *p.* marking and complex rhythmic patterns. The bass staff has many beamed notes and some dynamic markings like *pp*.

Handwritten musical notation for the fifth system. The treble staff has a *p.* marking and complex rhythmic patterns. The bass staff has many beamed notes and some dynamic markings like *pp*.

Handwritten musical notation for the sixth system. The treble staff has a *1.* marking and complex rhythmic patterns. The bass staff has many beamed notes and some dynamic markings like *pp*.

First system of handwritten musical notation. The treble staff contains a melodic line with various note values and accidentals. The bass staff provides a harmonic accompaniment with chords and single notes. A dynamic marking of *mf* (mezzo-forte) is present at the beginning of the system.

Second system of handwritten musical notation. The treble staff continues the melodic development with some slurs and accents. The bass staff maintains the accompaniment. A dynamic marking of *mf* is also present at the start of this system.

Third system of handwritten musical notation. The treble staff features more complex rhythmic patterns, including sixteenth and thirty-second notes. The bass staff continues with a steady accompaniment.

Fourth system of handwritten musical notation. The treble staff has a prominent melodic line with many slurs and accents. The bass staff continues with a consistent accompaniment.

Fifth system of handwritten musical notation. The treble staff begins with a 10-measure rest, indicated by a '10' above the staff. The bass staff continues with complex rhythmic figures, including sixteenth and thirty-second notes.

A rectangular piece of paper pasted over the fifth system, containing additional handwritten musical notation. It appears to be a correction or an alternative version of the music in that section.

Sixth system of handwritten musical notation. The treble staff contains a complex melodic line with many slurs and accents. The bass staff provides a harmonic accompaniment with chords and single notes.

Volti Subito.

Handwritten musical notation on a single staff, featuring a treble clef, a key signature of two flats (B-flat and E-flat), and a common time signature. The notation includes various rhythmic values such as eighth and sixteenth notes, and rests.

Handwritten musical notation on a single staff, featuring a bass clef, a key signature of two flats, and a common time signature. The notation includes various rhythmic values such as eighth and sixteenth notes, and rests. A *70.* is written below the first measure.

Handwritten musical notation on a single staff, featuring a treble clef, a key signature of two flats, and a common time signature. The notation includes various rhythmic values such as eighth and sixteenth notes, and rests.

Handwritten musical notation on a single staff, featuring a bass clef, a key signature of two flats, and a common time signature. The notation includes various rhythmic values such as eighth and sixteenth notes, and rests. A *70.* is written below the first measure.

Handwritten musical notation on a single staff, featuring a treble clef, a key signature of two flats, and a common time signature. The notation includes various rhythmic values such as eighth and sixteenth notes, and rests.

Handwritten musical notation on a single staff, featuring a bass clef, a key signature of two flats, and a common time signature. The notation includes various rhythmic values such as eighth and sixteenth notes, and rests.

Handwritten musical notation on a single staff, featuring a treble clef, a key signature of two flats, and a common time signature. The notation includes various rhythmic values such as eighth and sixteenth notes, and rests. A *70.* is written below the first measure.

Handwritten musical notation on a single staff, featuring a bass clef, a key signature of two flats, and a common time signature. The notation includes various rhythmic values such as eighth and sixteenth notes, and rests. A *70.* is written below the first measure.

Handwritten musical notation on a single staff, featuring a treble clef, a key signature of two flats, and a common time signature. The notation includes various rhythmic values such as eighth and sixteenth notes, and rests.

Handwritten musical notation on a single staff, featuring a bass clef, a key signature of two flats, and a common time signature. The notation includes various rhythmic values such as eighth and sixteenth notes, and rests.

Handwritten musical notation on a single staff, featuring a treble clef, a key signature of two flats, and a common time signature. The notation includes various rhythmic values such as eighth and sixteenth notes, and rests.

Handwritten musical notation on a single staff, featuring a bass clef, a key signature of two flats, and a common time signature. The notation includes various rhythmic values such as eighth and sixteenth notes, and rests.

Forti Subito.

Handwritten musical notation on a single staff system. The upper staff features a treble clef and contains a series of chords and melodic fragments. The lower staff features a bass clef and contains a series of chords, some marked with a fermata.

Handwritten musical notation on a single staff system. The upper staff features a treble clef and contains a series of chords and melodic fragments. The lower staff features a bass clef and contains a series of chords, some marked with a fermata.

Handwritten musical notation on a single staff system. The upper staff features a treble clef and contains a series of chords and melodic fragments. The lower staff features a bass clef and contains a series of chords, some marked with a fermata.

Handwritten musical notation on a single staff system. The upper staff features a treble clef and contains a series of chords and melodic fragments. The lower staff features a bass clef and contains a series of chords, some marked with a fermata.

Handwritten musical notation on a single staff system. The upper staff features a treble clef and contains a series of chords and melodic fragments. The lower staff features a bass clef and contains a series of chords, some marked with a fermata.

Handwritten musical notation on a single staff system. The upper staff features a treble clef and contains a series of chords and melodic fragments. The lower staff features a bass clef and contains a series of chords, some marked with a fermata.

Handwritten musical notation for the first system, featuring a treble clef staff with a melodic line and a bass clef staff with a bass line. The music is in a key with two sharps and a common time signature.

Handwritten musical notation for the second system, continuing the melodic and bass lines from the first system.

Handwritten musical notation for the third system, including dynamic markings such as *f* and *ff*.

Handwritten musical notation for the fourth system, showing further development of the musical themes.

Handwritten musical notation for the fifth system, concluding the main body of the piece.

Volte Subito.

Handwritten musical notation on a five-line staff. The system begins with a treble clef and a key signature of two sharps (F# and C#). The notation consists of a series of chords, primarily triads and dyads, with stems pointing upwards. The notes are arranged in a sequence that suggests a harmonic progression.

Handwritten musical notation on a five-line staff, continuing the piece. It features a treble clef and a key signature of two sharps. The notation is similar to the first system, showing a sequence of chords with stems pointing upwards.

Handwritten musical notation on a five-line staff. This system includes a change in key signature, indicated by a double sharp sign (F##) above the staff. The notation continues with chords and stems pointing upwards.

Handwritten musical notation on a five-line staff. The notation consists of chords with stems pointing upwards, maintaining the harmonic style of the previous systems.

Handwritten musical notation on a five-line staff. The notation continues with chords and stems pointing upwards.

Handwritten musical notation on a five-line staff. This system concludes with a double bar line. The notation includes chords with stems pointing upwards, and a final flourish of notes at the end of the piece.

Handwritten musical notation for the first system, featuring a treble and bass staff with various notes and rests.

Handwritten musical notation for the second system, including a treble staff with a large diagonal slash and a bass staff with notes.

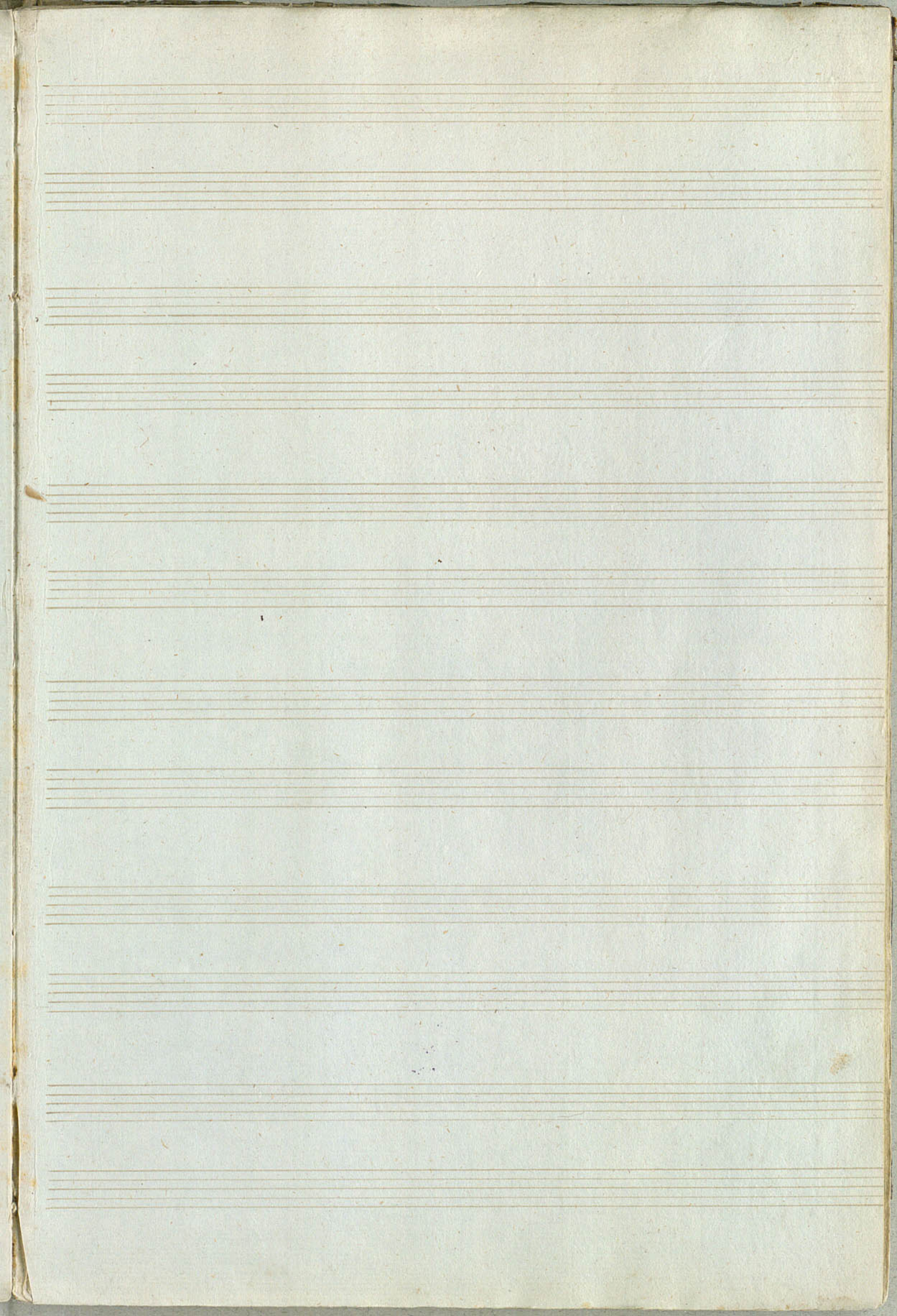
Handwritten musical notation for the third system, showing a treble staff with notes and a bass staff with notes and rests.

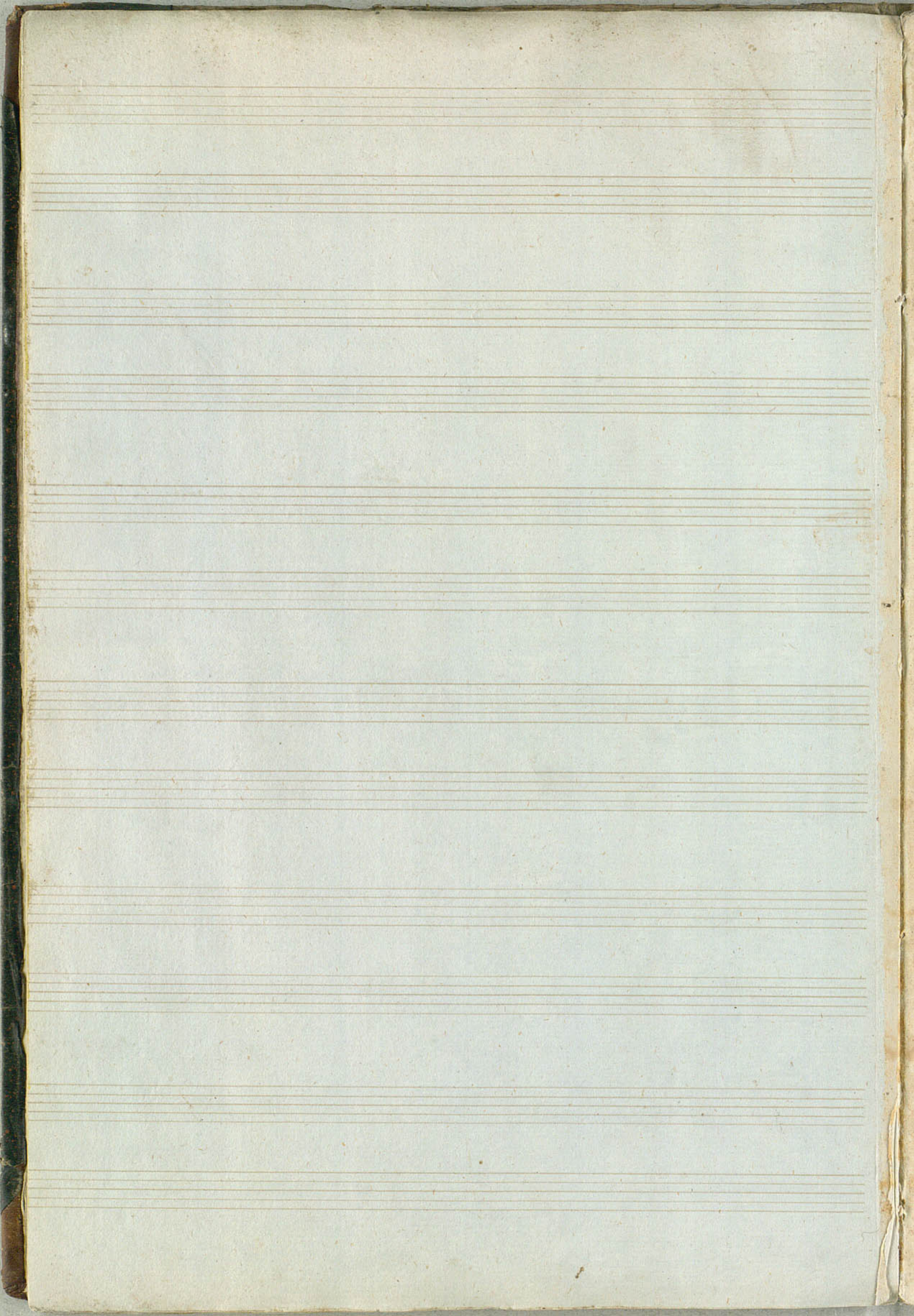
Handwritten musical notation for the fourth system, with a treble and bass staff and a rectangular patch covering a portion of the music.

Handwritten musical notation for the fifth system, featuring a treble staff with notes and a bass staff with notes and rests.

Handwritten musical notation for the sixth system, including a treble and bass staff with notes and rests.







Sonate

pour

la Harpe

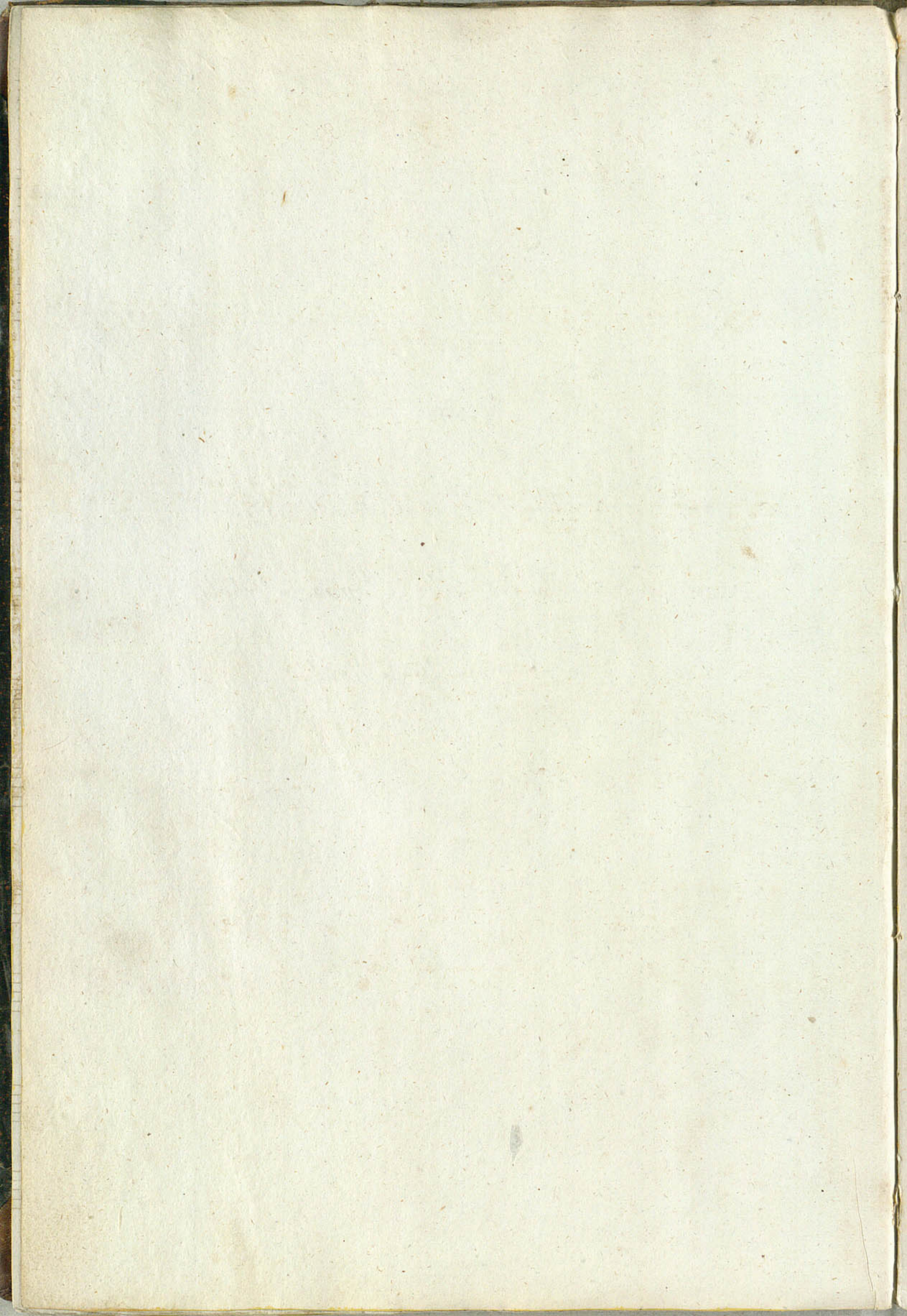
avec l'accompa^{ne}gnement d'une Violoncelle obligée,

composée et dédiée à la Demoiselle Sanna Perböl

à l'occasion de 26^{me} Avril

par

J. Schall



Lento di Molto

Handwritten musical notation for the first system, featuring a treble clef and a common time signature. The music includes a melodic line with a forte (*ff*) dynamic marking and a bass line with dense chordal accompaniment.

Handwritten musical notation for the second system, featuring a bass clef and a common time signature. The music consists of a single melodic line with a forte (*ff*) dynamic marking.

Handwritten musical notation for the third system, featuring a treble clef and a common time signature. The music consists of a single melodic line with a forte (*ff*) dynamic marking.

Handwritten musical notation for the fourth system, featuring a bass clef and a common time signature. The music consists of a single melodic line with a forte (*ff*) dynamic marking.

Andante Affettuoso Sostenuto

Handwritten musical notation for the fifth system, featuring a treble clef and a 2/4 time signature. The music includes a melodic line with a dolce *mf* dynamic marking and a bass line.

Handwritten musical notation for the sixth system, featuring a bass clef and a 2/4 time signature. The music consists of a single melodic line with a dolce *mf* dynamic marking.

Handwritten musical notation for the seventh system, featuring a treble clef and a common time signature. The music includes a melodic line with a forte (*f*) dynamic marking and a bass line.

Handwritten musical notation for the eighth system, featuring a bass clef and a common time signature. The music consists of a single melodic line with a forte (*f*) dynamic marking.

Handwritten musical notation for the ninth system, featuring a treble clef and a common time signature. The music includes a melodic line with a forte (*f*) dynamic marking and a bass line.

Handwritten musical notation for the tenth system, featuring a bass clef and a common time signature. The music consists of a single melodic line with a forte (*f*) dynamic marking.

Handwritten musical notation for the eleventh system, featuring a treble clef and a common time signature. The music includes a melodic line with a forte (*f*) dynamic marking and a bass line.

Handwritten musical notation for the twelfth system, featuring a bass clef and a common time signature. The music consists of a single melodic line with a forte (*f*) dynamic marking.

Var 1.

Handwritten musical notation for the first system, featuring a treble clef, a 2/4 time signature, and a key signature of one flat. The melody is written in a style characteristic of the 18th or 19th century, with many beamed eighth notes and slurs. The bass line consists of simple chords and rests.

Handwritten musical notation for the second system, continuing the melody and bass line from the first system.

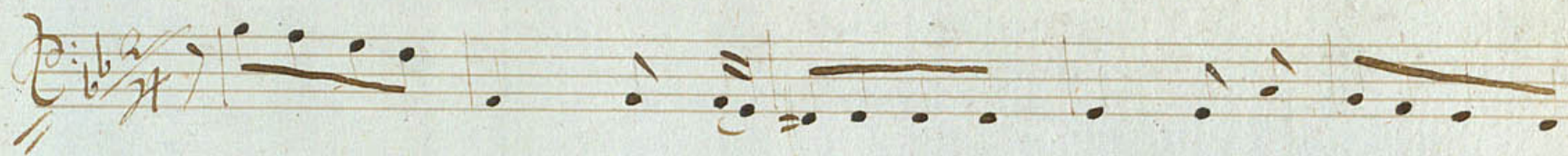
Handwritten musical notation for the third system, showing more complex rhythmic patterns in the treble clef.

Handwritten musical notation for the fourth system, including a change in the bass line with a 6/8 time signature.

Handwritten musical notation for the fifth system, featuring a key signature change to two flats.

Handwritten musical notation for the sixth system, ending with a double bar line and repeat signs.

Var 2



Var 3.



Handwritten initials or a signature in the bottom right corner of the page.

Handwritten musical notation for the first system, consisting of two staves with treble and bass clefs. The notation is dense with complex rhythmic patterns, including slurs and various note values.

Handwritten musical notation for the second system, consisting of two staves with treble and bass clefs. The notation is dense with complex rhythmic patterns, including slurs and various note values.

Handwritten musical notation for the third system, consisting of two staves with treble and bass clefs. The notation is dense with complex rhythmic patterns, including slurs and various note values.

Handwritten musical notation for the fourth system, consisting of two staves with treble and bass clefs. The notation is dense with complex rhythmic patterns, including slurs and various note values.

Handwritten musical notation for the fifth system, consisting of two staves with treble and bass clefs. The notation is dense with complex rhythmic patterns, including slurs and various note values.

Handwritten musical notation for the sixth system, consisting of two staves with treble and bass clefs. The notation is dense with complex rhythmic patterns, including slurs and various note values.

Var 5.

Handwritten musical notation for the first system, consisting of two staves. The top staff is in treble clef and the bottom in bass clef. Both are in 2/4 time and have a key signature of one flat (B-flat). The notation includes various rhythmic values and dynamic markings such as *for*.

Handwritten musical notation for the second system, consisting of two staves. The notation continues with complex rhythmic patterns and dynamic markings.

Handwritten musical notation for the third system, consisting of two staves. The notation features dense chordal textures and dynamic markings.

Handwritten musical notation for the fourth system, consisting of two staves. The notation includes dynamic markings such as *mf*.

Handwritten musical notation for the fifth system, consisting of two staves. The notation continues with complex rhythmic patterns.

Handwritten musical notation for the sixth system, consisting of two staves. The notation concludes with dynamic markings such as *ff*.

ff

Var 6.

Handwritten musical score for Variation 6. The first system consists of two staves with a treble clef, a key signature of two flats (B-flat and E-flat), and a 2/4 time signature. The second system also consists of two staves with the same clef and key signature. A rectangular patch of paper is pasted over the right side of the second system, containing additional musical notation. The word "mf" is written in the left margin of this patch.

Var 7.

Handwritten musical score for Variation 7. The first system consists of two staves with a treble clef, a key signature of two flats, and a 2/4 time signature. The second system consists of two staves with a treble clef and a key signature of two flats. The third system consists of two staves with a treble clef and a key signature of two flats. The fourth system consists of two staves with a treble clef and a key signature of two flats. The fifth system consists of two staves with a treble clef and a key signature of two flats. The sixth system consists of two staves with a treble clef and a key signature of two flats. The seventh system consists of two staves with a treble clef and a key signature of two flats. The eighth system consists of two staves with a treble clef and a key signature of two flats. The ninth system consists of two staves with a treble clef and a key signature of two flats. The tenth system consists of two staves with a treble clef and a key signature of two flats.

Var 8.

Var. 9.

This image shows a page of handwritten musical notation, titled "Var. 9." in the upper left corner. The notation is arranged in ten systems, each consisting of a treble staff (top) and a bass staff (bottom). The notes are written in a style characteristic of 18th or 19th-century manuscripts, with stems and beams connecting notes. The paper is aged and shows some staining. A rectangular piece of paper is pasted over the middle of the manuscript, partially obscuring the notation in the fourth and fifth systems. The notation includes various musical symbols such as clefs, notes, rests, and beams.

Handwritten musical notation on a single staff, featuring a treble clef, a key signature of two flats (B-flat and E-flat), and a common time signature. The notation includes several beamed eighth notes and rests, concluding with a double bar line and a repeat sign.

Handwritten musical notation on a single staff, featuring a bass clef, a key signature of two flats (B-flat and E-flat), and a common time signature. The notation includes several beamed eighth notes and rests, concluding with a double bar line and a repeat sign.

Var. 10.

Handwritten musical notation on a single staff, featuring a treble clef, a key signature of two flats (B-flat and E-flat), and a 2/4 time signature. The notation includes a series of beamed eighth notes and rests, with a fermata over the final measure.

Handwritten musical notation on a single staff, featuring a bass clef, a key signature of two flats (B-flat and E-flat), and a 2/4 time signature. The notation includes a series of beamed eighth notes and rests, with a fermata over the final measure.

Handwritten musical notation on a single staff, featuring a treble clef, a key signature of two flats (B-flat and E-flat), and a common time signature. The notation includes a series of beamed eighth notes and rests, with a fermata over the final measure.

Handwritten musical notation on a single staff, featuring a bass clef, a key signature of two flats (B-flat and E-flat), and a common time signature. The notation includes a series of beamed eighth notes and rests, with a fermata over the final measure.

Handwritten musical notation on a single staff, featuring a treble clef, a key signature of two flats (B-flat and E-flat), and a common time signature. The notation includes a series of beamed eighth notes and rests, with a fermata over the final measure.

Handwritten musical notation on a single staff, featuring a bass clef, a key signature of two flats (B-flat and E-flat), and a common time signature. The notation includes a series of beamed eighth notes and rests, with a fermata over the final measure.

Handwritten musical notation on a single staff, featuring a treble clef, a key signature of two flats (B-flat and E-flat), and a common time signature. The notation includes a series of beamed eighth notes and rests, with a fermata over the final measure.

Handwritten musical notation on a single staff, featuring a bass clef, a key signature of two flats (B-flat and E-flat), and a common time signature. The notation includes a series of beamed eighth notes and rests, with a fermata over the final measure.

Handwritten musical notation on a single staff, featuring a treble clef, a key signature of two flats (B-flat and E-flat), and a common time signature. The notation includes a series of beamed eighth notes and rests, with a fermata over the final measure.

Handwritten musical notation on a single staff, featuring a bass clef, a key signature of two flats (B-flat and E-flat), and a common time signature. The notation includes a series of beamed eighth notes and rests, with a fermata over the final measure.

Allegro di Molto Agitato

The first system of handwritten musical notation consists of two staves. The upper staff is in treble clef and contains a melodic line with eighth and sixteenth notes, some beamed together. The lower staff is in bass clef and contains a bass line with chords and single notes.

The second system of handwritten musical notation consists of two staves. The upper staff continues the melodic line with various note values and rests. The lower staff continues the bass line with chords and single notes.

The third system of handwritten musical notation consists of two staves. The upper staff features a melodic line with some slurs and dynamic markings. The lower staff continues the bass line with chords and single notes.

The fourth system of handwritten musical notation consists of two staves. The upper staff shows a melodic line with many sixteenth notes, some beamed together. The lower staff continues the bass line with chords and single notes.

The fifth system of handwritten musical notation consists of two staves. The upper staff continues the melodic line with many sixteenth notes. The lower staff continues the bass line with chords and single notes.

The sixth system of handwritten musical notation consists of two staves. The upper staff continues the melodic line with many sixteenth notes. The lower staff continues the bass line with chords and single notes.

Handwritten musical notation on two staves. The upper staff is in treble clef with a key signature of two flats (B-flat and E-flat). The lower staff is in bass clef. The music consists of rhythmic patterns of eighth and sixteenth notes.

Handwritten musical notation on two staves. The upper staff is in treble clef with a key signature of two flats. It features a section of sixteenth-note runs. The lower staff is in bass clef. The word "for." is written in the middle of the system, with a small cross above it.

Handwritten musical notation on two staves. The upper staff is in treble clef with a key signature of two flats, showing dense sixteenth-note passages. The lower staff is in bass clef with sparse notes.

Handwritten musical notation on two staves. The upper staff is in treble clef with a key signature of two flats, featuring sixteenth-note runs. The lower staff is in bass clef with sparse notes.

Handwritten musical notation on two staves. The upper staff is in treble clef with a key signature of two flats, featuring sixteenth-note runs. The lower staff is in bass clef with sparse notes. A large, faint blue watermark is visible in the background.

A rectangular piece of paper pasted onto the bottom left of the page, containing handwritten musical notation on two staves. The notation is in treble and bass clefs with a key signature of one flat.

Handwritten musical notation on two staves at the bottom right of the page. The upper staff is in treble clef with a key signature of two flats, showing sixteenth-note runs. The lower staff is in bass clef with sparse notes.

Handwritten musical notation on two staves. The upper staff features a treble clef, a key signature of one flat (B-flat), and a complex melodic line with many beamed notes. The lower staff features a bass clef and a simpler accompaniment line with some rests.

Handwritten musical notation on two staves. The upper staff has a treble clef, one flat, and includes the word *br.* above the staff. The lower staff has a bass clef and includes the word *br.* above the staff. There is significant scribbling and crossing out of notes in the lower staff.

Handwritten musical notation on two staves. The upper staff has a treble clef, one flat, and contains a series of beamed notes. The lower staff has a bass clef, one flat, and contains a series of beamed notes.

Handwritten musical notation on two staves. The upper staff has a treble clef, one flat, and contains a series of beamed notes. The lower staff has a bass clef, one flat, and contains a series of beamed notes.

Handwritten musical notation on two staves. The upper staff has a treble clef, one flat, and contains a series of beamed notes. The lower staff has a bass clef, one flat, and contains a series of beamed notes.

Handwritten musical notation on two staves. The upper staff has a treble clef, one flat, and contains a series of beamed notes. The lower staff has a bass clef, one flat, and contains a series of beamed notes.

Handwritten musical notation on a five-line staff, featuring a treble clef and a key signature of two flats. The notation consists of a series of chords and melodic fragments.

Handwritten musical notation on a five-line staff, featuring a bass clef and a key signature of two flats. The notation consists of a series of chords and melodic fragments.

Handwritten musical notation on a five-line staff, featuring a treble clef and a key signature of two flats. The notation consists of a series of chords and melodic fragments.

Handwritten musical notation on a five-line staff, featuring a bass clef and a key signature of two flats. The notation consists of a series of chords and melodic fragments, with some blue ink annotations.

Handwritten musical notation on a five-line staff, featuring a treble clef and a key signature of two flats. The notation consists of a series of chords and melodic fragments.

Handwritten musical notation on a five-line staff, featuring a bass clef and a key signature of two flats. The notation consists of a series of chords and melodic fragments.

Handwritten musical notation on a five-line staff, featuring a treble clef and a key signature of two flats. The notation consists of a series of chords and melodic fragments.

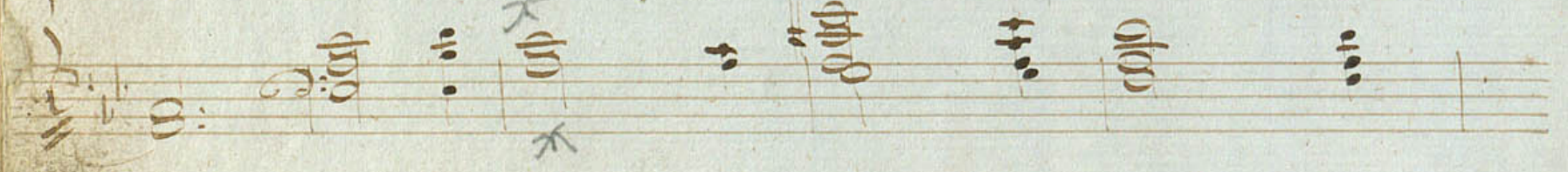
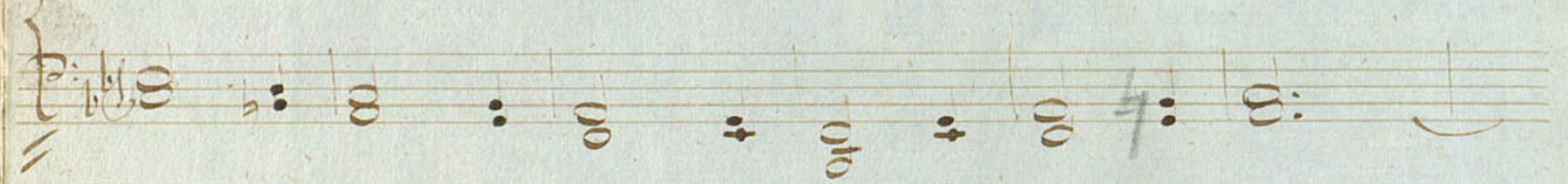
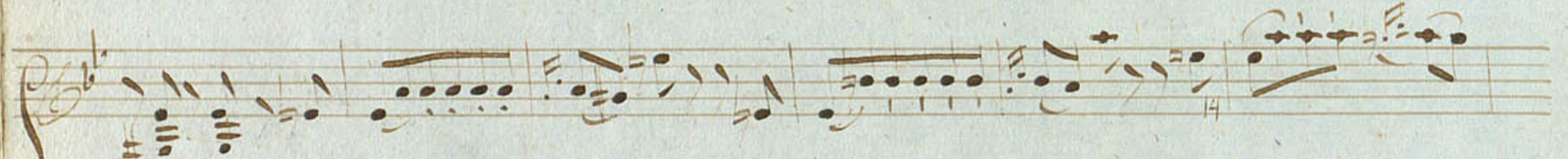
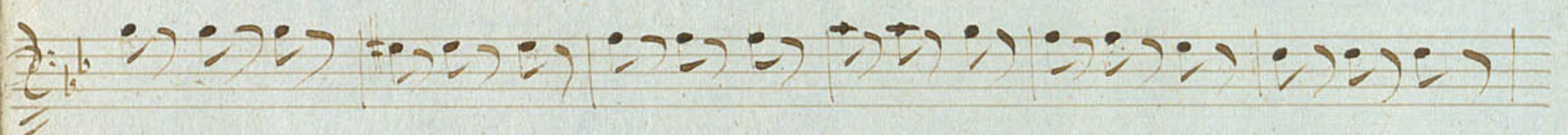
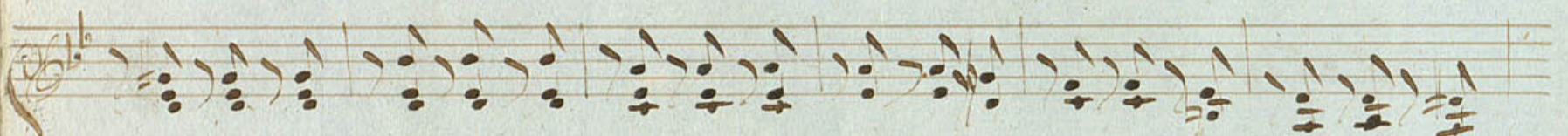
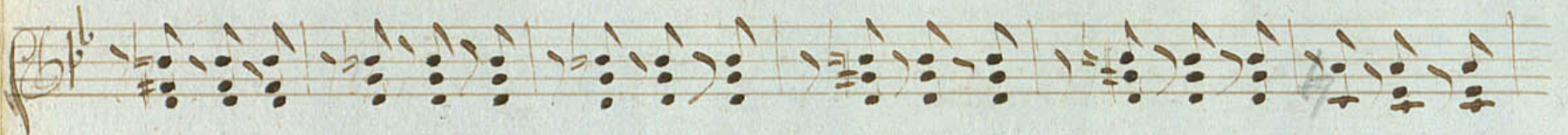
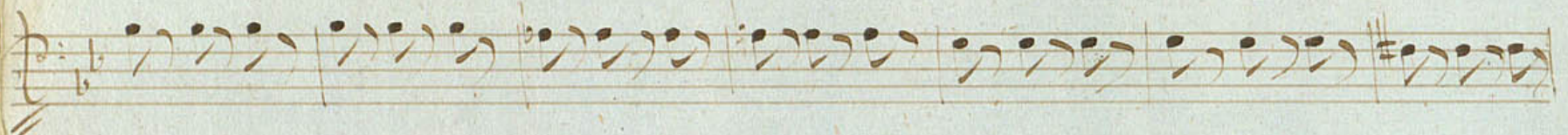
Handwritten musical notation on a five-line staff, featuring a bass clef and a key signature of two flats. The notation consists of a series of chords and melodic fragments, with some blue ink annotations.

Handwritten musical notation on a five-line staff, featuring a treble clef and a key signature of two flats. The notation consists of a series of chords and melodic fragments.

Handwritten musical notation on a five-line staff, featuring a bass clef and a key signature of two flats. The notation consists of a series of chords and melodic fragments.

Handwritten musical notation on a five-line staff, featuring a treble clef and a key signature of two flats. The notation consists of a series of chords and melodic fragments, with a blue ink annotation above the staff.

Handwritten musical notation on a five-line staff, featuring a bass clef and a key signature of two flats. The notation consists of a series of chords and melodic fragments, with a blue ink annotation below the staff.



Handwritten musical notation on a five-line staff, featuring a treble clef and a key signature of one flat. The notation consists of a series of beamed eighth notes and sixteenth notes, with some notes marked with small upward-pointing arrows.

Handwritten musical notation on a five-line staff, featuring a bass clef and a key signature of one flat. The notation consists of a series of beamed eighth notes and sixteenth notes, with some notes marked with small upward-pointing arrows.

Handwritten musical notation on a five-line staff, featuring a treble clef and a key signature of one flat. The notation consists of a series of beamed eighth notes and sixteenth notes, with some notes marked with small upward-pointing arrows.

Handwritten musical notation on a five-line staff, featuring a bass clef and a key signature of one flat. The notation consists of a series of beamed eighth notes and sixteenth notes, with some notes marked with small upward-pointing arrows.

Handwritten musical notation on a five-line staff, featuring a treble clef and a key signature of one flat. The notation consists of a series of beamed eighth notes and sixteenth notes, with some notes marked with small upward-pointing arrows.

Handwritten musical notation on a five-line staff, featuring a bass clef and a key signature of one flat. The notation consists of a series of beamed eighth notes and sixteenth notes, with some notes marked with small upward-pointing arrows.

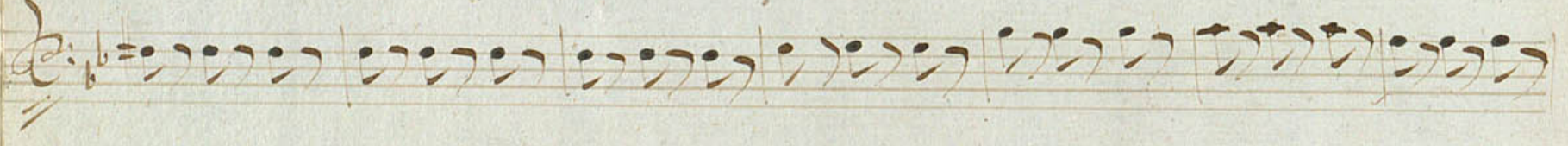
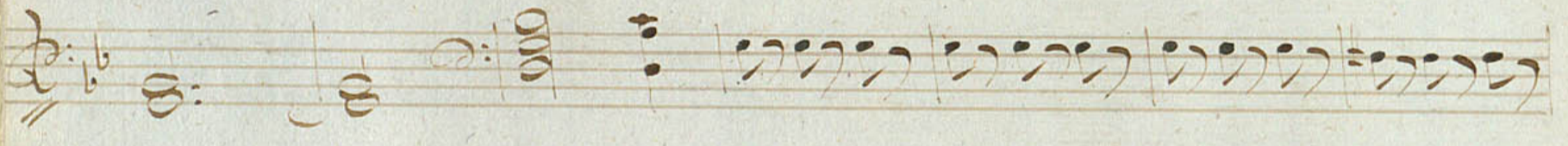
Handwritten musical notation on a five-line staff, featuring a treble clef and a key signature of one flat. The notation consists of a series of beamed eighth notes and sixteenth notes, with some notes marked with small upward-pointing arrows.

Handwritten musical notation on a five-line staff, featuring a bass clef and a key signature of one flat. The notation consists of a series of beamed eighth notes and sixteenth notes, with some notes marked with small upward-pointing arrows.

Handwritten musical notation on a five-line staff, featuring a treble clef and a key signature of one flat. The notation consists of a series of beamed eighth notes and sixteenth notes, with some notes marked with small upward-pointing arrows. A large, stylized signature or initial is written in the right margin of this system.

Handwritten musical notation on a five-line staff, featuring a bass clef and a key signature of one flat. The notation consists of a series of beamed eighth notes and sixteenth notes, with some notes marked with small upward-pointing arrows.

Four empty five-line musical staves at the bottom of the page.



8

+

Handwritten musical notation on two staves. The upper staff features a treble clef and a key signature of one flat (B-flat). The lower staff features a bass clef and a key signature of one flat. The music consists of a series of eighth and sixteenth notes, with some beamed groups.

Handwritten musical notation on two staves. The upper staff continues with treble clef and one flat. The lower staff continues with bass clef and one flat, showing some rests and chordal structures.

Handwritten musical notation on two staves. The upper staff continues with treble clef and one flat. The lower staff continues with bass clef and one flat, featuring some beamed sixteenth notes.

Handwritten musical notation on two staves. The upper staff continues with treble clef and one flat. The lower staff continues with bass clef and one flat, showing a mix of note values.

Handwritten musical notation on two staves. The upper staff continues with treble clef and one flat. The lower staff continues with bass clef and one flat, including some rests and chordal figures.

Handwritten musical notation on two staves. The upper staff continues with treble clef and one flat. The lower staff continues with bass clef and one flat, ending with a double bar line and a final chord.

Handwritten signature or initials at the bottom right corner.

Handwritten musical notation on a five-line staff, featuring a treble clef and a key signature of one sharp (F#). The notation includes various note values, rests, and a large 'X' mark above the staff.

Handwritten musical notation on a five-line staff, featuring a bass clef and a key signature of one sharp (F#). The notation includes various note values and rests.

Handwritten musical notation on a five-line staff, featuring a treble clef and a key signature of one sharp (F#). The notation includes various note values and rests.

Handwritten musical notation on a five-line staff, featuring a bass clef and a key signature of one sharp (F#). The notation includes various note values and rests.

Handwritten musical notation on a five-line staff, featuring a treble clef and a key signature of one sharp (F#). The notation includes various note values and rests.

Handwritten musical notation on a five-line staff, featuring a bass clef and a key signature of one sharp (F#). The notation includes various note values and rests.

Handwritten musical notation on a five-line staff, featuring a treble clef and a key signature of one sharp (F#). The notation includes various note values and rests.

Handwritten musical notation on a five-line staff, featuring a bass clef and a key signature of one sharp (F#). The notation includes various note values and rests.

Handwritten musical notation on a five-line staff, featuring a treble clef and a key signature of one sharp (F#). The notation includes various note values, rests, and a large 'X' mark above the staff.

Handwritten musical notation on a five-line staff, featuring a bass clef and a key signature of one sharp (F#). The notation includes various note values and rests.

Handwritten musical notation on a five-line staff, featuring a treble clef and a key signature of one sharp (F#). The notation includes various note values and rests.

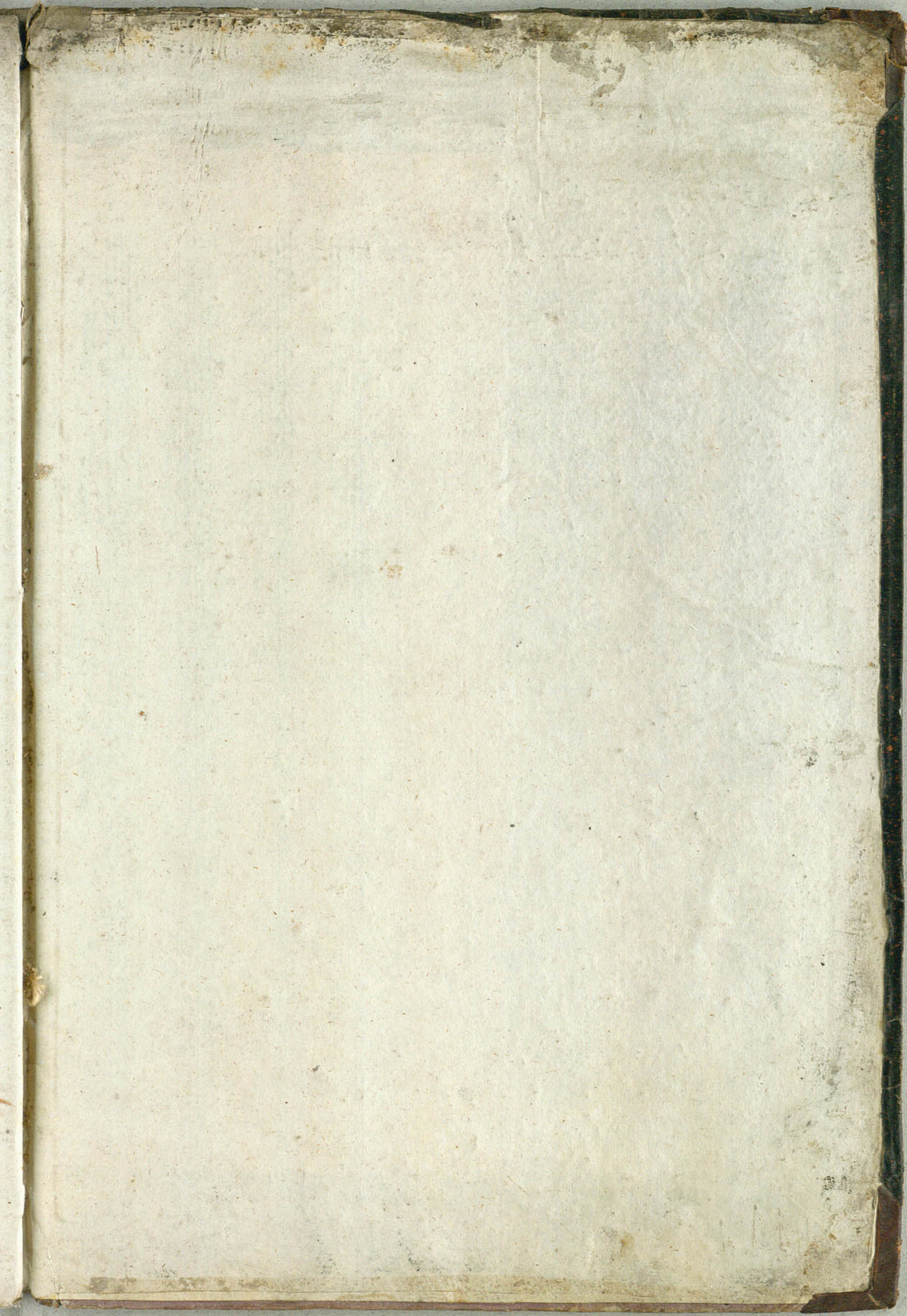
Handwritten musical notation on a five-line staff, featuring a bass clef and a key signature of one sharp (F#). The notation includes various note values and rests.

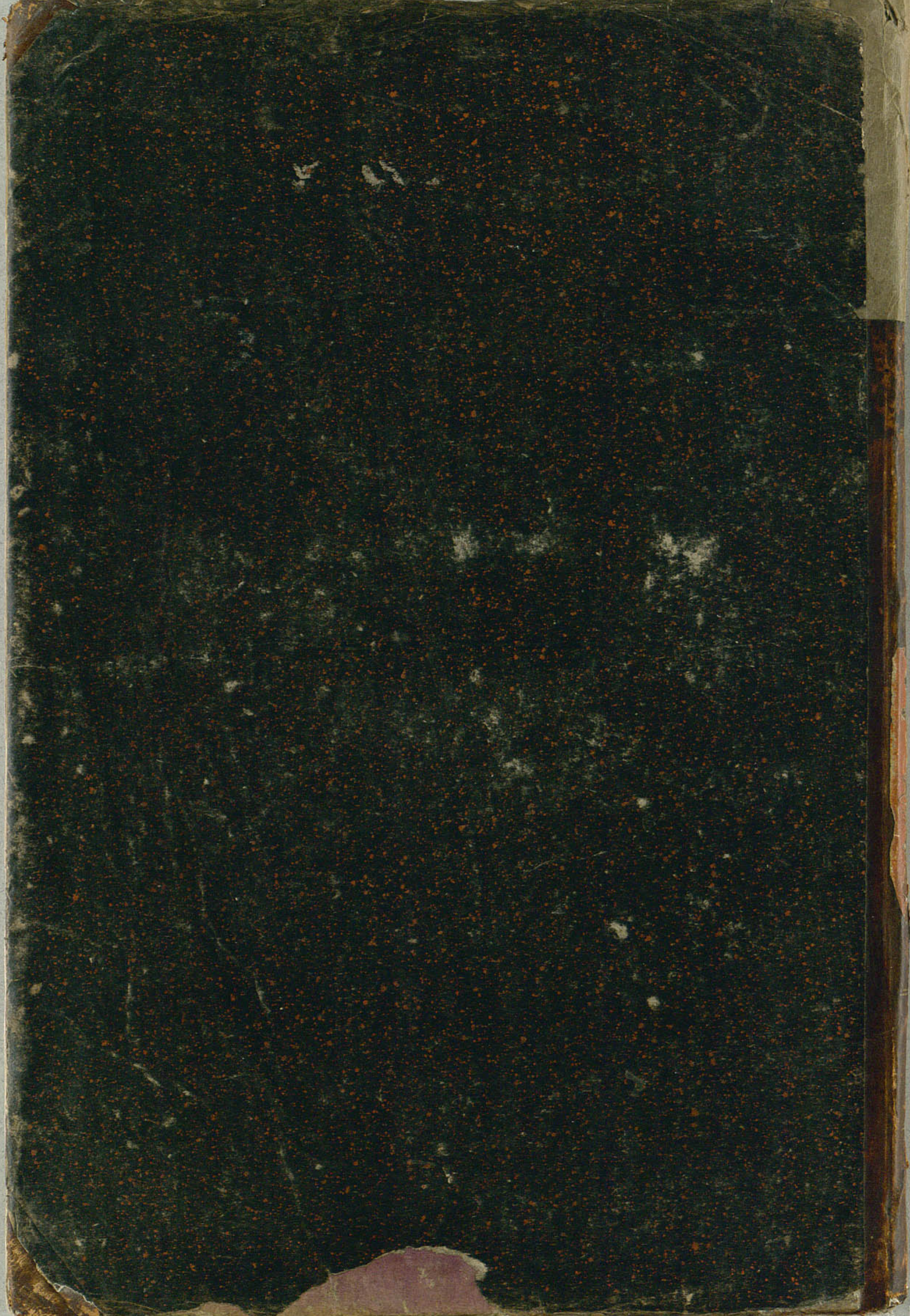




Fragment









L. L. L.

С, II 12.

P. Schall: Kompositioner No 10.

Sonate

pour

La Harpe

Composée et Dédicée

à

Madame Anne Magaretha Ipsen

Née Turböl

Par

P. Schall