

Two Intermissions

I

Morton Feldman
(1950)

$\text{♩} = \text{about } 69$

very soft

7

13

19

25

b.

8va

31

Accidentals affect only the notes they immediately precede.

Copyright © 1962 by C.F. Peters Corporation
373 Park Avenue South, New York, NY 10016
International Copyright Secured. All Rights Reserved.
Alle Rechte vorbehalten.

II

8va

5

9

13

17

21

25

8va

8va

8va

Intermission 3

Morton Feldman
(1952)

Musical score system 1, measures 1-6. It features three staves: a grand staff (treble and bass clefs) and a separate bass clef staff below. The grand staff contains melodic lines for the left hand (L.H.) and right hand (R.H.). The lower staff contains complex chordal textures. A small asterisk (*) is placed at the beginning of the lower staff.

Musical score system 2, measures 7-15. It features three staves. The grand staff continues the melodic lines. The lower staff includes a section marked *8va* (octave up) in the bass clef. Pedal markings are present: $\frac{1}{2}$ Ped. and Ped. with dashed lines indicating duration.

Musical score system 3, measures 16-24. It features three staves with complex rhythmic and harmonic patterns in the grand staff and the lower staff.

Musical score system 4, measures 25-32. It features three staves. The tempo marking *rit.* (ritardando) is placed at the beginning. The system concludes with a *Ped.* marking and a dashed line.

* Pitches on this staff should be depressed silently.

Intermission 4

Morton Feldman
(1952)

♩ = 48

p

6

f *p*

10

Ped.

16

Intermission 5

Morton Feldman
(1952)

Slow

8va

fff *ppp*

Hold sustain and una corda pedals throughout

7

8va

fff *ppp*

13

8va

8va

19

8va

fff *ppp*

8ba

25

8va

31

8va

fff *ppp*

37 *8va*

43 *8va* *8va*

49 *8va*

55 *8va* *8va* *8va*

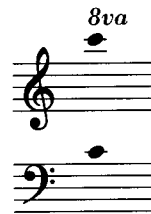
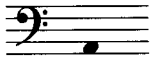
61 *8va* *8va* *8va*

67 *8va* *8va* *8va*

Intermission 6

(for 1 or 2 Pianos)

Morton Feldman
(1953)



Composition begins with any sound and proceeds to any other. With a minimum of attack, hold each sound until barely audible. Grace notes are not played too quickly. All sounds are to be