

FOR ISABEL ETTENAUER

LA MAISON DE
FRED

FOR SPEAKING, SINGING +
WHISTLING TOY-PIANIST

JOE CUTLER (2001)

①

♩ = C.124

LA MAISON DE FRED

(Spoken)

QUARTER TO. THAT MEANS, TEN MINUTES FROM THE TUBE STATION TO HERE. USED TO BE FIVE. WHICH CONVINCES ME THE STREETS MUST HAVE GOT SLOWLY LONGER. CERTAINLY A LOTS CHANGED. NOW THE OLD COSMO CAFE'S GONE AS WELL. ALL THAT'S LEFT NOW FOR OUR SORT IS THAT LITTLE HUNGARIAN PLACE, LOUIS'S PATISSERIE. I TURN TOWARDS IT.

PLAY 3x

Toy Piano

Musical notation for the first system. It consists of two staves. The left staff is for the piano accompaniment, starting with a piano (p) dynamic. The right staff contains a spoken section with a wavy line indicating the spoken text.

(Spoken)

PLAY 4x

SUB-DEN LY I HAVE THIS DIM INK-LING THAT

Musical notation for the second system. It features piano accompaniment with a mezzo-forte (mf) dynamic and a vocal line with lyrics. The lyrics are: "SUB-DEN LY I HAVE THIS DIM INK-LING THAT".

A YOUNG GIRL IS STAND-ING IN FRONT OF ME A TOU-RIST A FRENCH

Musical notation for the third system. It features piano accompaniment and a vocal line with lyrics: "A YOUNG GIRL IS STAND-ING IN FRONT OF ME A TOU-RIST A FRENCH".

WO-MAN SOON SHE DE-GINS TO SPEAK TO ME IN FRENCH

Musical notation for the fourth system. It features piano accompaniment and a vocal line with lyrics: "WO-MAN SOON SHE DE-GINS TO SPEAK TO ME IN FRENCH".

EXCUS-EZ moi MA-DAME VOUS PAR-LEZ FRAN-CAIS

CAN I SPEAK FRENCH? NOW THERE'S A STORY! BUT I'M FAR TOO MODEST TO TELL IT AT THE MOMENT; SO I JUST ANSWER:

Musical notation for the fifth system. It features piano accompaniment with a forte (f) dynamic and a vocal line with lyrics: "EXCUS-EZ moi MA-DAME VOUS PAR-LEZ FRAN-CAIS". The system concludes with a piano section marked "P" and "RIT AD LIB".

Piano

OUI UN PEU VOUS VOULEZ? ALORS MA-DAME JE CHERCHE

Handwritten musical score for the first system. The piano part is in the left hand, and the vocal line is in the right hand. The lyrics are: OUI UN PEU VOUS VOULEZ? ALORS MA-DAME JE CHERCHE. Dynamics include *mf* and *f*. There are accents (>) over the notes.

LA MAISON DE FRED DE FRED? C'EST UN AMI DE VOUS

Handwritten musical score for the second system. The piano part is in the left hand, and the vocal line is in the right hand. The lyrics are: LA MAISON DE FRED DE FRED? C'EST UN AMI DE VOUS. Dynamics include *mf* and *f*. There are accents (>) over the notes.

VOUS N'AVEZ PAS L'ADRESSE? OUI C'EST

Handwritten musical score for the third system. The piano part is in the left hand, and the vocal line is in the right hand. The lyrics are: VOUS N'AVEZ PAS L'ADRESSE? OUI C'EST. Dynamics include *f*. There are accents (>) over the notes.

ATTENDEZ UN PEU SI VOUS PLAÎT MAREFIELD GARDENS LA MAISON

Handwritten musical score for the fourth system. The piano part is in the left hand, and the vocal line is in the right hand. The lyrics are: ATTENDEZ UN PEU SI VOUS PLAÎT MAREFIELD GARDENS LA MAISON. There are accents (>) over the notes.

DE FRED ZIEG — MOUNDE FRED) VOUS DEVEZ CERTAINEMENT LA CONNAÎTRE...

Handwritten musical score for the fifth system. The piano part is in the left hand, and the vocal line is in the right hand. The lyrics are: DE FRED ZIEG — MOUNDE FRED) VOUS DEVEZ CERTAINEMENT LA CONNAÎTRE... Dynamics include *ff*. There are accents (>) over the notes.

3

A TEMPO (WITH DRIVE)

Toy Piano

ff cresc. ff cresc.

mf ff

ff mf

(SPOKEN)

OH YES, I KNOW IT! THE FREUD HOUSE
FREUD MUSEUM AS IT'S CALLED THESE DAYS....

mp

NOTHING ALTERED AFTER THE DEATH OF THE GREAT MASTER, EVERYTHING LEFT UNTOUCHED, INTACT, EVEN

THE BOOKS. THE PAINTINGS. THOSE BARK DEPRESSING SCULPTURES . . .

Toylano

Handwritten musical notation for the first system, featuring piano and right-hand parts with dynamic markings like mp and LH.

THE COUCH AH YES, THE COUCH. AND SUDDENLY A MEMORY COMES BACK TO ME FROM CHILDHOOD: ONE SO STRONG THAT I'M NO LONGER STANDING ON A LONDON STREET OPPOSITE A FRENCH TOURIST

Handwritten musical notation for the second system, including piano and right-hand parts with dynamic markings like mp and LH.

A Tempo (♩ = 6.124)

NO, I'M ONCE AGAIN AT HOME IN OUR COMFORTABLE FLAT BY ST. STEPHEN'S CATHEDRAL . . .

I CAN STILL HEAR THE BELLS OF OLD STEPHEN'S (OR ARE THEY THOSE OF THE TRAMS?)

Handwritten musical notation for the third system, showing piano and right-hand parts with 'RPT AD LIB.' markings and arrows.

I'M SITTING IN MY ROOM PLAYING THE PIANO; IN THE NEXT ROOM MY BROTHER, LITTLE HANS, IS PLAYING SOMETHING ELSE. WHAT HE WAS PLAYING WITH I DON'T KNOW TO THIS VERY DAY; I ONLY REMEMBER HOW OFTEN OUR MOTHER USED TO SAY TO HIM

Handwritten musical notation for the fourth system, including piano and right-hand parts with 'RPT AD LIB.' markings and arrows.

"HANS, IF YOU DON'T STOP PLAYING WITH THAT, I'M GOING TO ASK DOCTOR FRED TO CUT IT OFF!"

Handwritten musical notation for the fifth system, featuring piano and right-hand parts with 'RPT AD LIB.' markings and arrows.

5.

... AND THOUGH I DON'T YET KNOW WHO HE WAS—THIS DOCTOR TO WHOM MY BROTHER WENT FROM TIME TO TIME, AND ALWAYS RETURNED TREMBLING....

THESE WORDS BEGAN TO KINDLE AN UNCOMFORTABLE ANXIETY IN MY BREAST.....

by piano

Two measures of piano accompaniment. The first measure starts with a piano (p) dynamic marking. Both measures include the instruction 'RPT AD. LIB.' with a long arrow pointing to the right, indicating a repeat and ad libitum performance.

... BUT I NEVER EXPECTED THAT THE DAY WOULD SOON ARISE WHEN I, TOO, WOULD BE FORCED TO VISIT THE DOCTOR.....

I WAS NOW EIGHTEEN AND HAD GROWN INTO A HANDSOME YOUNG GILL....

Two measures of piano accompaniment. The first measure includes a 'rit' (ritardando) marking. The second measure features a simple smiley face drawing. The instruction 'RPT AD. LIB.' with an arrow is present at the end of the first measure.

Al TEMPO ♩ = C. 124

(spoken)

Vocal line for the first section. The lyrics are: "Now Young LA-3Y ASKED THE Doc-TOR Po-LITE-Ly WHAT'S". The music is in a major key with a treble clef. Accents (>) are placed over the notes for emphasis.

(SPOKEN HYSTERICALLY + QUITE QUICKLY)

Vocal line for the second section. The lyrics are: "THE MAT-TER WITH YOU". The music continues with piano accompaniment. A rectangular box encloses the piano accompaniment for the final three measures, with the instruction 'RPT AD. LIB.' and an arrow pointing to the right.

SHE'S SUFFERING FROM HYSTERIA, ANSWERED MY MOTHER. SHE INTRODUCED HER TO SO MANY YOUNG MEN, BUT SHE WANTS NONE OF THEM, SAID SHE WANTS TO GO TO UNIVERSITY AND STUDY LITERATURE. FRENCH LITERATURE AT THAT! AND BECAUSE HER FATHER WON'T ALLOW IT, NOW SHE DOES NOTHING BUT CRY, DAY AND NIGHT....

Vocal line for the third section. The lyrics are: "AND THE GILL HER-SELF WHAT DOES SHE THINK". The music continues with piano accompaniment. A dynamic marking of 'mf' (mezzo-forte) is present at the beginning.

By THIS TIME, HOWEVER, I'D ARRIVED AT A CERTAIN UNDERSTANDING OF THE FREUDIAN WAY OF THINKING; SO I SAID.....

Piano

RPT. AD LIB.

WHE-THER I'M SUFF-ER-ING FROM HY-STER-IA OR NOT I DON'T KNOW FOR CER-TAIN

mp *foco*

WHAT IS CER-TAIN IS THAT LAST NIGHT I EX-PE-RIENCED A TER-RIB-LE DREAM

mp *cresc.*

IN-DEED SAID THE DO-CTOR SIT-TING UP STRAIGHT AND

mf

WHAT SORT OF DREAM WAS IT? WELL, I WAS WITH MY BRO-TH-ER IN A

p *poco*

7

Piano

Big DARK Wood OUR Mo-ther had sent us there To GA-ther

Musical notation for the first system, including piano and mp dynamics.

MUSH-Rooms BUT Now WHEN I LOOKED DOWN IN-TO

Musical notation for the second system, including mp and p dynamics.

MY LIT-TLE BAS-KET I NOT-ICED IT WAS FULL OF

Musical notation for the third system, including mp dynamics.

SNAKES And AL-So EELS!

Musical notation for the fourth system, including mf and f dynamics.

(Rushing & excited) AND IN THE MIDDLE OF THE WOOD THERE STOOD AN GIANTIC TOWER
 JUST LIKE THE BIBLICAL TOWER OF BABEL, WHICH YOU
 CAN READ ABOUT IN THE HOLY SCRIPTURES

Musical notation for the fifth system, including f dynamics and a "RPT. AD LIB" instruction.

Polina

VE-ry IN-TE-RES-ting MY CHILD SAID THE DOC-TOR WRI-ting SOME-thing DOWN

Musical notation for the first system, including piano and vocal staves.

WITH GREAT PAS-sion AND THEN? THEN I TOOK MY Bro-ther's HAND AND HELPED HIM

Musical notation for the second system, including piano and vocal staves.

CLIMB THE Tower AND UP AT THE TOP OF THE Tower WE FOUND A

Musical notation for the third system, including piano and vocal staves.

LIT THE ROOM JUST LIKE ONE FINDS AT THE TOP OF A LIGHT-HOUSE...

Musical notation for the fourth system, including piano and vocal staves.

...AND IN THE ROOM STOOD A LITTLE MAN... WHO WAS?

WHO WAS NONE OTHER THAN YOU, HERR DOCTOR! —

AND WHAT DID HE SAY, THIS MAN? — HE DIDN'T SAY ANYTHING HE SANG. LIKE THIS...

Musical notation for the fifth system, including piano and vocal staves, ending with a large arrow pointing right.

9.

(SUNG WITH MELODY OF RIGHT HAND)

OH CHIL—DREN MINE , WHAT DOTH YOU VEX

Handwritten musical notation for the first system. The right hand contains the melody with lyrics: "OH CHIL—DREN MINE , WHAT DOTH YOU VEX". The left hand provides piano accompaniment. The key signature is one sharp (F#) and the time signature is common time (C). The music is marked with a dynamic of *mp*.

PER—HAPS SOME OE—DI—PAL Com—PLEX BE NOT AF—RAID! THIS KIND—LY WITCH WILL

Handwritten musical notation for the second system. The right hand contains the melody with lyrics: "PER—HAPS SOME OE—DI—PAL Com—PLEX BE NOT AF—RAID! THIS KIND—LY WITCH WILL". The left hand provides piano accompaniment. The key signature is one sharp (F#) and the time signature is common time (C).

CURE YOU BOTH LI—THAT A HITCH I AM THAT LEA—NER

Handwritten musical notation for the third system. The right hand contains the melody with lyrics: "CURE YOU BOTH LI—THAT A HITCH I AM THAT LEA—NER". The left hand provides piano accompaniment. The key signature is one sharp (F#) and the time signature is common time (C).

SAGE WHO CURES THE RATMAN OF HIS RAGE THE WOLF—MAN TOO OR

Handwritten musical notation for the fourth system. The right hand contains the melody with lyrics: "SAGE WHO CURES THE RATMAN OF HIS RAGE THE WOLF—MAN TOO OR". The left hand provides piano accompaniment. The key signature is one sharp (F#) and the time signature is common time (C).

THE—EA—PY COMES OF—TOU HERE TO Play WITH ME

Handwritten musical notation for the fifth system. The right hand contains the melody with lyrics: "THE—EA—PY COMES OF—TOU HERE TO Play WITH ME". The left hand provides piano accompaniment. The key signature is one sharp (F#) and the time signature is common time (C).

And Now You Two HAVE COME TO GREET ME IN MY LAIR

Ho - cus Po - cus EL-DEE BUSH A - way with your PEE - GEMS without! sits

BUT DEC-DEE THERE LI - THIN YOUR ROOM WHAT GLOWS AND FLICKER IN THE GLOOM IT

Looks so LIKE A GREAT BIG ov-er MY FE-ARS A-LAS I CAN-NOT

Go-VERN ACH CHILD THAT'S ALL HA-LLU-ci-na-tion BROUGHT

on BY YOU AN-AL FIX A-tion COME CHILD BY THE HAND YOU

TAKE YOU AND IN MY ov-er HEE HEE! TAKE YOU!

FAST & FURIOUS

BUT SEEING THAT HE MEANT TO BURN US... WE GAVE ONE SHOVE + INTO THE FURNACE!... HOWS FOCUS! WITCHES BREW!... OLD DEVIL, NOW WE'RE RID OF YOU!

* BLOW WHISTLE IN TIME WITH R.H. of TOY PIANO

Toy Piano

ff

ff

ff

ff

WHISTLE AS ACADEMIA

ff

— AND THEN I AWOKE FROM A DEEP SLEEP, AND BUT DOCTOR, WHAT'S THE MATTER WITH YOU? WHY SO PALE?

A GHOST!

ONE WOULD ALMOST THINK YOU'D SEEN

— I THINK, SAID DOCTOR FREUD TREMBLING, THAT THE BEST COURSE OF TREATMENT WOULD BE FOR THIS YOUNG GIRL TO GO TO THE UNIVERSITY, TO STUDY FRENCH.

13.

AS A GHOSTLY WALTZ

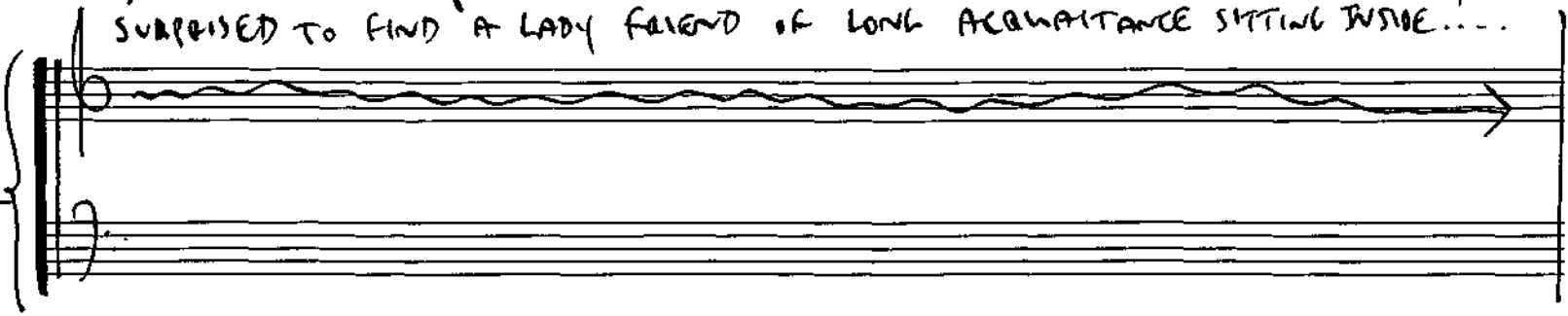
Poly Piano

Tempo meno (♩ = 120) THREE O'CLOCK, YES,

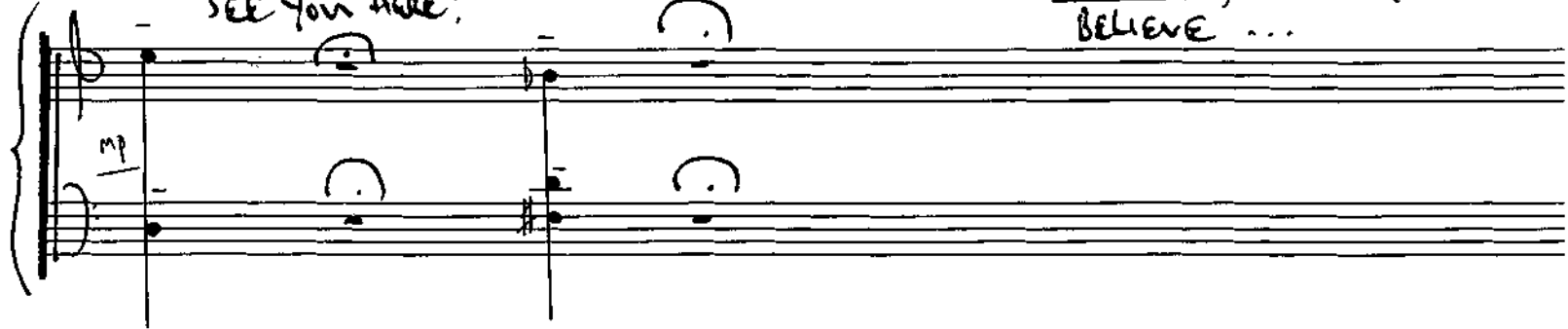
HIS STILL THERE IN FRONT OF MY EYES, HIS DOCTOR, WITH THAT COMICAL
 EXPRESSION OF HIS... BUT WHAT AM I RAMBLING ON ABOUT? WHERE AM I?
 I'M STILL STANDING ON THE STREET, THE YOUNG FRENCH LADY HAS LONG SINCE VANISHED AND...

.. AH WELL. I STEP INSIDE LOUIS'S PÂTISSERIE AND AM NOT OVERLY SURPRISED TO FIND A LADY FRIEND OF LONG ACQUAINTANCE SITTING INSIDE....

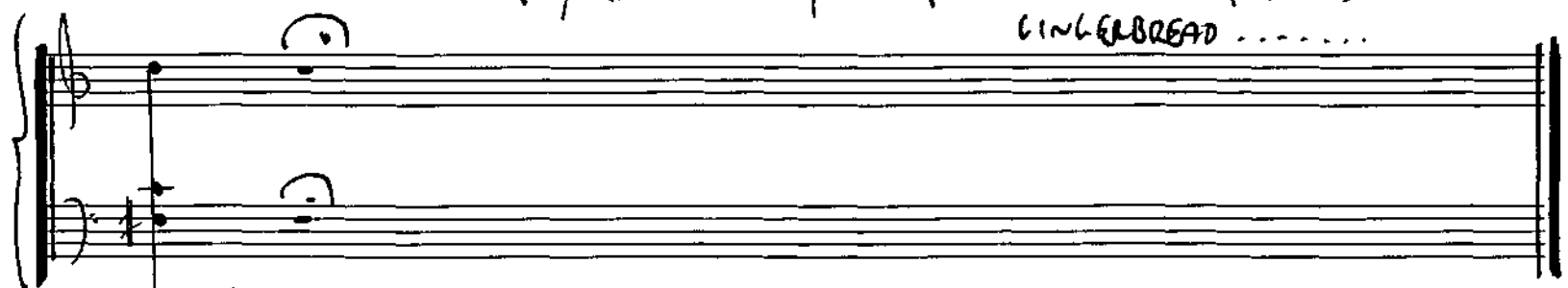
Taylor



GREETE! HELLO!
How NICE TO SEE YOU HERE!
ACH MIZZI, DO YOU KNOW WHAT'S JUST HAPPENED?
I MET THIS YOUNG TOURIST - A FRENCH GIRL -
AND SHE ASKED ME - IN FRENCH, WOULD YOU BELIEVE ...



O GRETEL PLEASE, LET THAT WAIT, JUST A MOMENT PLEASE... FIRST
YOU SIMPLY MUST TRY A PIECE OF THIS FABULOUS
GINGERBREAD



NEASDEN

July 22nd

2001