

Berlioz, Hector
(1803-1869)

Beatrice & Benedict Overture

Low Brass Excerpts
compiled by
Gordon Cherry, principal trombone
Vancouver Symphony

Copyright © 2002 Cherry Classics
www.Cherry-Classics.com

Ouverture

zu Beatrice und Benedict.

Oper in 2 Akten nach Shakespeare.

Ouverture

pour Béatrice et Bénédict.

Opéra en 2 Actes d'après Shakespeare.

Overture

to Beatrice and Benedict.

Opera in 2 Acts after Shakespeare.

Trombone I.

H. Berlioz.

Allegro scherzando. (♩ = 66)

(Silence.)

3 1 3 10 1 19

(Silence.)

G.P. G.P.

Andante un poco sostenuto.

Allegro. (♩ = 104)

9 2 15 8 3 6 10 4 14

5 6 6 22 7 27 8 12 9 1 21

10 31 11 Violini. 1 2 3

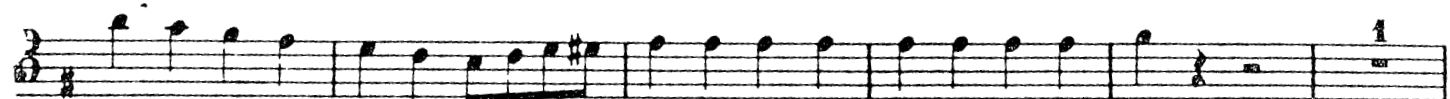
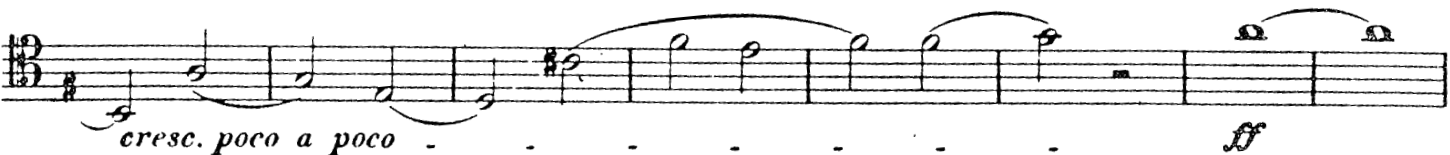
ff

12 3

pp

Morlioz Beatrice and Benedict

Trombone I.



Ouverture

zu Beatrice und Benedict.

Oper in 2 Akten nach Shakespeare.

Ouverture

pour Béatrice et Bénédict.

Opéra en 2 Actes d'après Shakespeare.

Overture

to Beatrice and Benedict.

Opera in 2 Acts after Shakespeare.

Trombone II.

H. Berlioz.

Allegro scherzando. (♩ = 66) (Silence.)

3 1 3 10 1 19

(Silence.) G.P. G.P.

Andante un poco sostenuto. Allegro. (♩ = 104)

9 2 15 8 3 6 10 4 14

5 6 6 22 7 27 8 12 9 1 21

10 31 11 Violini.

1 2 3

ff

12 3 *p*

Berlioz Beatrice and Benedict

Trombone II.

13

sempre pp

14

cresc. poco a poco - - - - - *ff*

15

p *cresc. poco a poco* - - - - -

16

Ouverture

zu Beatrice und Benedict.

Oper in 2 Akten nach Shakespeare.

Ouverture

pour Béatrice et Bénédict.

Opéra en 2 Actes d'après Shakespeare.

Overture

to Beatrice and Benedict.

Opera in 2 Acts after Shakespeare.

Trombone III.

H. Berlioz.

Allegro scherzando. (♩ = 66) (Silence.)

3 1 3 (Silence.) 10 1 19

G.P. G.P.

Andante un poco sostenuto.

Allegro. (♩ = 104)

9 2 15 8 3 6 10 4 14

5 6 6 22 7 27 8 12 9 1 21

10 31 11 Violini.

ff

12 3 *pp*

Berlioz Beatrice and Benedict

Trombone III.

First musical staff in bass clef with a key signature of one sharp (F#). It contains a sequence of eighth notes with stems pointing up, starting on G2 and moving up stepwise to G3.

Second musical staff in bass clef with a key signature of one sharp (F#). It begins with a boxed measure number '13'. The notes are G2, A2, B2, C3, D3, E3, F#3, G3, A3, B3, C4, D4, E4, F#4, G4, A4, B4, C5. The notes from G3 to C5 are beamed together. The dynamic marking *sempre pp* is written below the staff.

Third musical staff in bass clef with a key signature of one sharp (F#). It begins with a boxed measure number '14'. The notes are G2, A2, B2, C3, D3, E3, F#3, G3, A3, B3, C4, D4, E4, F#4, G4, A4, B4, C5. The notes from G3 to C5 are beamed together. The dynamic marking *p* is written below the staff.

Fourth musical staff in bass clef with a key signature of one sharp (F#). It contains a sequence of notes: G2, A2, B2, C3, D3, E3, F#3, G3, A3, B3, C4, D4, E4, F#4, G4, A4, B4, C5. The notes from G3 to C5 are beamed together. The dynamic marking *cresc. poco a poco* is written below the staff, and *ff* is written at the end.

Fifth musical staff in bass clef with a key signature of one sharp (F#). It contains a sequence of notes: G2, A2, B2, C3, D3, E3, F#3, G3, A3, B3, C4, D4, E4, F#4, G4, A4, B4, C5. The notes from G3 to C5 are beamed together. A first ending bracket labeled '1' is placed above the final measure.

Sixth musical staff in bass clef with a key signature of one sharp (F#). It begins with a boxed measure number '15'. The notes are G2, A2, B2, C3, D3, E3, F#3, G3, A3, B3, C4, D4, E4, F#4, G4, A4, B4, C5. The notes from G3 to C5 are beamed together. The dynamic marking *p* is written below the staff, and *cresc. poco a poco* is written below the staff.

Seventh musical staff in bass clef with a key signature of one sharp (F#). It contains a sequence of notes: G2, A2, B2, C3, D3, E3, F#3, G3, A3, B3, C4, D4, E4, F#4, G4, A4, B4, C5. The notes from G3 to C5 are beamed together. The dynamic marking *ff* is written below the staff.

Eighth musical staff in bass clef with a key signature of one sharp (F#). It begins with a boxed measure number '16'. The notes are G2, A2, B2, C3, D3, E3, F#3, G3, A3, B3, C4, D4, E4, F#4, G4, A4, B4, C5. The notes from G3 to C5 are beamed together. The dynamic marking *ff* is written below the staff.

Ninth musical staff in bass clef with a key signature of one sharp (F#). It contains a sequence of notes: G2, A2, B2, C3, D3, E3, F#3, G3, A3, B3, C4, D4, E4, F#4, G4, A4, B4, C5. The notes from G3 to C5 are beamed together. The dynamic marking *mf* is written below the staff, and *f* is written at the end.

Tenth musical staff in bass clef with a key signature of one sharp (F#). It contains a sequence of notes: G2, A2, B2, C3, D3, E3, F#3, G3, A3, B3, C4, D4, E4, F#4, G4, A4, B4, C5. The notes from G3 to C5 are beamed together. The dynamic marking *ff* is written below the staff.